



## ICE CREAM DISPLAY KOMODO 6X5L

Meet our efficient and stylish ice cream display Komodo!

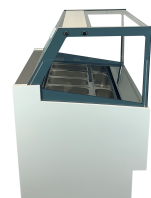


This ice cream display is the perfect solution for showcasing and storing scoop ice cream, ideal for ice cream parlors, hospitality venues, or events. Thanks to ventilated cooling, the temperature is evenly distributed, while automatic defrosting makes maintenance easy. The LED lighting ensures an attractive presentation of the ice cream, enticing customers to make a flavorful choice. With enough space for 6 containers of 5 liters, this display freezer offers optimal storage capacity. Dimensions: 910x880x1300 mm (WxDxH) - Capacity: 189 liters - Temperature: -16/-18°C - Energy consumption: 0.86 kW - Weight: 106 kg.

### Key features:

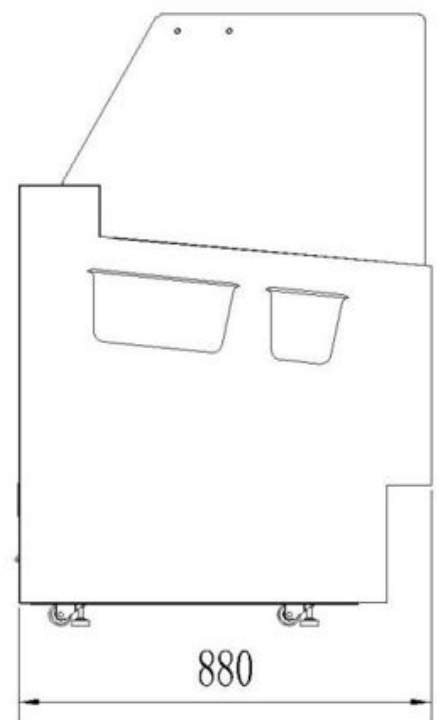
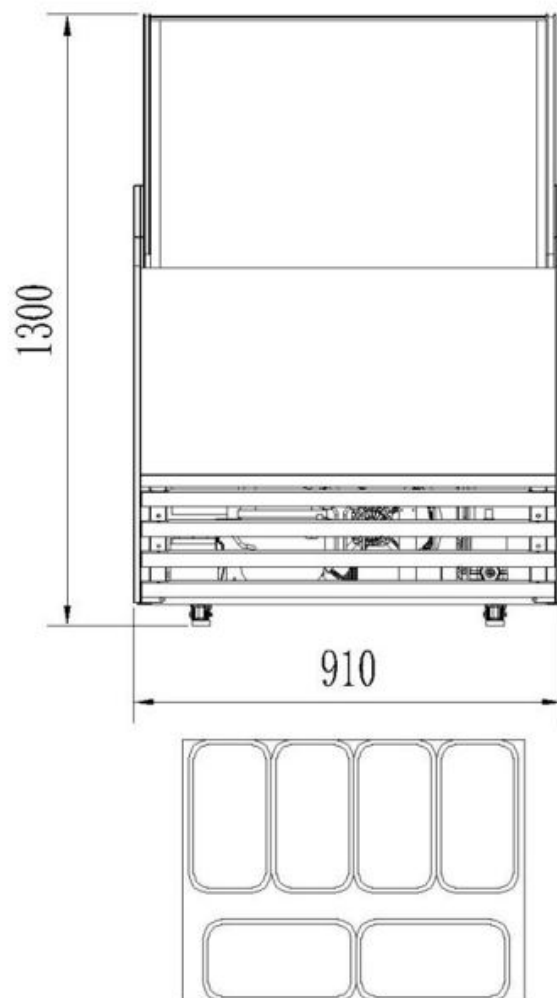
- **Ventilated cooling:** ensures even temperature distribution.
- **Automatic defrosting:** easy to maintain and time-saving.
- **LED lighting:** illuminates the ice cream in an energy-efficient and attractive way.
- **Spacious capacity:** holds 6 containers of 5 liters.
- **Available in 3 sizes:** choose the ideal solution for your business and assortment.

Whether you run an ice cream parlor, own a food truck, or sell ice cream at events, the Komodo ice cream display combines efficiency, style, and ease of use. Order now and ensure a perfect presentation of your delicious ice cream!





Width (mm)	910	Depth (mm)	880
Height (mm)	1300	Color	White
Net weight(kg)	106	Voltage (Volt)	230
Frequency (Hz)	50	Electrical power (kW)	0,86
Cooling agent	R 290	Capacity in units per time	6x5 ltr
Temperature range (°C)	-16/-18	Gross Capacity (Ltr)	189
Operation	Digital	Temperature display	Yes, digital
Lights	Yes, LED	Type of cooling	Ventilated
Mobile	Yes	Noise level (dB)	64
Under cooling	No	Execution window	Right
Defrost	Automatic	Max. ambient temperature (°C)	38
Insulation thickness (mm)	60	Brand	COMBISTEEL
Refrigerant quantity (gr)	148	Energy label	C
EPREL ID	2069621	Plug and play (EU only)	Yes





# ENERG




Combisteel B.V.

7487.0250



**4651** kWh/annum

  
**0,51** m<sup>2</sup>

 **-16°C**  
**-19°C**

2019/2018