



## ICE CREAM DISPLAY JAVA BLACK 8x5 LTR

Meet our efficient and stylish black ice cream display Java!

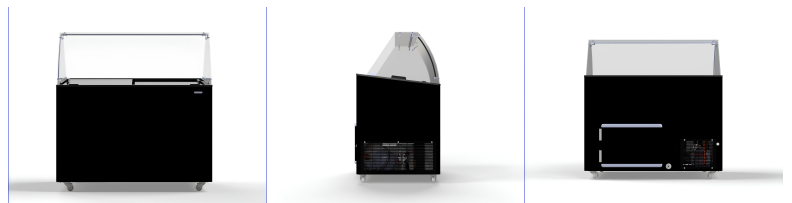


This stylish black ice cream display is the perfect choice for presenting and storing scoop ice cream in ice cream parlors, restaurants, or during events. The static cooling system ensures a constant temperature, while the manual defrosting makes maintenance easy. The display can hold 8 trays of 5 liters, and the undercooling offers additional storage space. The model is movable, allowing you to reposition it flexibly. It also features sliding windows, which further enhance accessibility and ease of use. Dimensions: 1184x727x1229 mm (WxDxH) - Temperature: -24/-14°C - Power consumption: 0.2 kW - Weight: 85 kg.

### Features:

- **Static cooling:** ensures a constant temperature.
- **Manual defrosting:** for easy maintenance.
- **Sliding windows:** facilitate access to the ice and improve ease of use.
- **Movable:** for flexible repositioning.
- **Available in 3 sizes, also in white:** choose the ideal size for your business.

Whether you run an ice cream parlor or sell ice cream at events, this black ice cream display Java offers the perfect combination of style, functionality, and ease of use. Order now and offer your customers an irresistible presentation of your delicious ice cream!





EAN code	7422242973912	Width (mm)	1184
Depth (mm)	684	Height (mm)	1229
Color	Black	Gross Weight (kg)	85
Particulars	Storage space for 10 ice bins of 5L (36x16.5)	Voltage (Volt)	230
Frequency (Hz)	50	Electrical power (kW)	0,2
Cooling agent	R 290	Capacity in units per time	8x5 ltr
Temperature range (°C)	-24/-14	Gross Capacity (Ltr)	355
Dim. interior WxDxH (mm)	1060x560x688	Lights	No
Type of cooling	Static	Mobile	Yes
Noise level (dB)	50	Under cooling	Yes
Defrost	Manual	Max. ambient temperature (°C)	30
Power consumption (Kw/24h)	3,01	Brand	COMBISTEEL
Refrigerant quantity (gr)	110 / 150	Energy label	A
EPREL ID	1941424	Plug and play (EU only)	Yes



# ENERG



Combisteel

7472.0129



**A**

**1099** kWh/annum



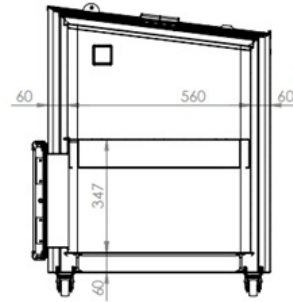
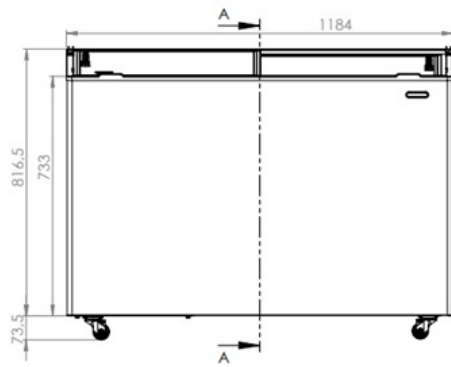
**0.59** m<sup>2</sup>



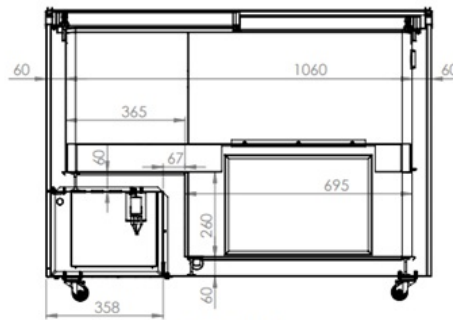
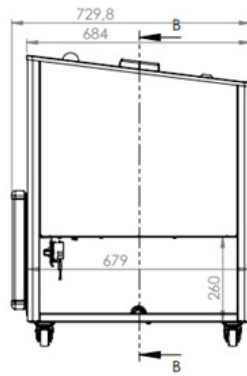
**-18°C**

**-15°C**

2019/2018



SECTION A-A  
SCALE 1 : 10



SECTION B-B  
SCALE 1 : 10

